



Cultivating the Health of Our Communities

Wabanaki Public  
Health & Wellness

## **Invitation to Bid**

### **Request For Quote – 2022-006 – Siding**

August 8<sup>th</sup>, 2022

Dear Recipient,

Wabanaki Public Health and Wellness would like to extend this Invitation to Bid (ITB) on our recently posted Request for Quote (RFQ) 2022-006 Siding. Wabanaki Public Health and Wellness is seeking quotes for building siding work at our commercial building located at 1221 Medway Road, Millinocket, ME 04462. You will find the details of the requested services attached to this document and on our website, [Procurement | Wabanaki Public Health and Wellness \(wabanakiphw.org\)](https://www.wabanakiphw.org/procurement). If you are interested, please email Jude Perry, and we'll work to schedule a building walkthrough with a representative from each company.

Sincerely,

Jude Perry

Financial Operations Coordinator

Wabanaki Public Health and Wellness

[jperry@wabanakiphw.org](mailto:jperry@wabanakiphw.org)



### **Basis of Bid**

This construction project will ensure that the Millinocket property is protected from the elements and safely accessible to all occupants. Below is a categorical breakdown of all the requested work elements. You may submit your detailed estimate document or fill out and submit the bid tab below. In addition, please see the supplemental documents, which contain the current design and layout of the Millinocket property. The plans provided will give you the square footage needed and trim lengths to be replaced and wrapped. Disclaimer: Contractor will be responsible for providing all materials specified in the attached estimate.

### **Base Bid**

1. Siding
  - a. Replace siding; the building will be wrapped under Contract **2022-004 – Demo and Repairs.**

### **Specifications:**

1. Siding
  - a. Ledge Stone Bristol Flats 10 sq foot handy pack and all associated corner/trim pieces - Basement Level
  - b. Install vinyl siding planks – First and Second Floor Levels
  - c. Aspen Brown Engineered Rigid Cedar Shake – Peak Level
  - d. Contractor to provide all necessary materials related to installation including starters strips, j channels, corner molding, drip caps, and all other items needed for the proper installation of the siding.



Cultivating the Health of Our Communities

Wabanaki Public  
Health & Wellness

## **BID TAB**

### **Base Bid: 2022-006 - Siding**

Contractor Name:

Date:

Signature of Bidder:

Due Date: 08/22/2022 at Noon

Bids will NOT be opened and read aloud. Please submit bids via email to [jperry@wabanakiphw.org](mailto:jperry@wabanakiphw.org) or by mail to PO Box 1356, Bangor, ME 04402. The project bid is to be reviewed and awarded within three weeks and awarded bidder is to start work immediately.

<i>Item/Service Description</i>	<i>Amount</i>	<i>Unit</i>	<i>Price Per</i>	<i>Total</i>
See attached estimate for list of materials and quantities needed				
			<b>Grand total</b>	17,672.61



# BID PROPOSAL

## NEW ENGLAND OUTDOOR CTR - SIDING

1 of 2

<b>BID NUMBER: 7869644</b>	<b>PREPARED FOR: 558317</b>	<b>BRANCH LOCATION: 003</b>
Bid Date: 8/04/22	ANACCO CONSTRUCTION SRVS (003) 25 LAKE SHORE DRIVE GREENE, ME 04236	AUBURN BRANCH BEACON BUILDING PRODUCTS 80 KITTYHAWK AVENUE AUBURN, ME 04210
<b>Valid Until</b> <b>Sunday, September 04 , 2022</b>	Telephone: 207-692-6837	Telephone: 207-784-1525 Sls id: Ent Ini: JCH

LINE	QUANTITY	DESCRIPTION	UNIT PRICE	DISCOUNT	NET UNIT PRICE	EXTENDED PRICE
10	312	PC CER MGRAM D4 RC GRANITE GRAY ( .0833 SQ Per PC ) 24PCS/CTN 12PCS/SQ .046 3311034	SQ 13.53PC		162.4200	4,222.92
20	38	PC ACO STARTER ALUM SPRING 10' VSS10NS00 50PC/CTN SPRING STYLE .5"X10'	PC		6.2500	237.50
30	48	PC CER J CHANL 3/4 1"F GRANITE GRY 48/CTN GRANITE GRAY 5030334 DO NOT MIX	PC		7.8900	378.72
40	48	PC CER USILL GRANITE GRAY 48/CTN 5690434	PC		7.8900	378.72
50	7	PC ACO OSCP TRAD W/F 5.5"X20' WHIT TFOP5504 W/FOAM 20' 4PC/CTN WHITE	PC		110.0000	770.00
60	6	PC CER ISCP 3/4 MT GRANITE GRAY 10/CTN 5143634	PC		17.9800	107.88
70	238	PC CER NORTHWD S7 RS GRANITE GRAY ( .0588 SQ Per PC ) 17PCS/CTN 17PCS/SQ 6010634	SQ 23.18PC		394.2000	5,518.80
80	8	PC CER LINEAL 5"X20' COL WHITE 10/CTN 5471201	PC		55.0000	440.00
90	16	PC CER STARTER NEWCON WIN/DOOR 10' 36/CTN 5360500 >> LINEAL & STARTER FOR BAND <<	PC		15.0000	240.00
110	16	PC BBP DCW ALUM ECONOMY WHT DRIP CAP 1-1/8"X10' WHITE #5524100120 FORMERLY# DCWW18	PC		5.2500	84.00
150	100	PC TAN STACKED STN PREM PNL LEW CR ( .0500 SQ Per PC ) 24PLEWCCF LEWISTON CREST 1 CTN = 1/2 SQUARE 10PC/CTN 20PC/SQ	SQ 31.90PC		638.0300	3,190.15
160	18	PC TAN STACK STN PREM OSC 18" LEWI LEWIS CRUST 6 PCS/CTN 9.2 LF PER CTN	PC		24.2500	436.50



# BID PROPOSAL

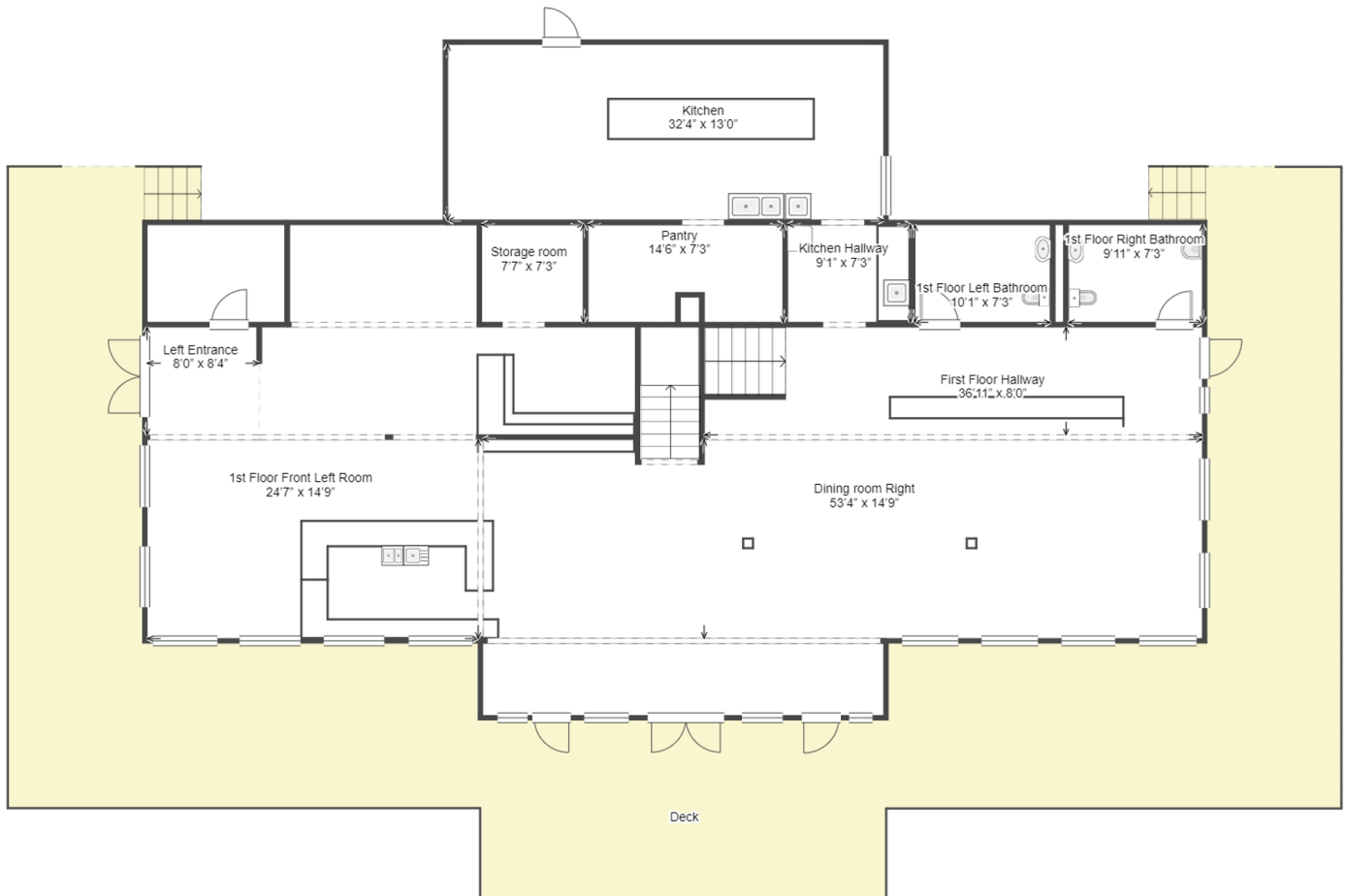
## NEW ENGLAND OUTDOOR CTR - SIDING

<b>BID NUMBER: 7869644</b>	<b>PREPARED FOR: 558317</b>	<b>BRANCH LOCATION: 003</b>
Bid Date: 8/04/22 <div>Valid Until Sunday, September 04 , 2022</div>	ANACCO CONSTRUCTION SRVS (003) 25 LAKE SHORE DRIVE GREENE, ME 04236  Telephone: 207-692-6837	AUBURN BRANCH BEACON BUILDING PRODUCTS 80 KITTYHAWK AVENUE AUBURN, ME 04210  Telephone: 207-784-1525 Sls id: Ent Ini: JCH

LINE	QUANTITY	DESCRIPTION	UNIT PRICE	DISCOUNT	NET UNIT PRICE	EXTENDED PRICE
180	20	PC TAN UNIV START STRIP 10' TANUSS 25/CTN	PC		11.2500	225.00
190	54	PC TAN J-CHANNEL 1-1/8 LEWISTON CR 1JFLEWV 30PCS CTN LEWISTON CREST	PC		9.6500	521.10
***** QUANTITIES ARE BEST ESTIMATE AND SUBJECT TO CHANGE. CONTACTOR TO CONFIRM. MOST SIDING PRODUCTS ARE SPECIAL ORDER IN FULL CTNS ONLY - NO RETURNS. *****						
PLEASE BE ADVISED THAT BEACON CAN ONLY HONOR A MANUFACTURERS QUOTE TO THE SAME EXTENT THAT THE MANUFACTURER HONORS THEIR QUOTE. ALL MATERIALS WILL BE PRICED AT THE TIME OF SHIPMENT. DUE TO THE CURRENT VOLATILITY OF THE MARKET, EXPECT EXTENDED LEAD TIMES AND POSSIBLE MISSED LOADS. WHERE PROJECT PRICING IS BASED ON FULL TRUCKLOAD QUANTITIES; WAREHOUSE ORDERS CANNOT BE SOLD AT THE FULL TRUCK PRICE. ALL QUOTES ARE SUBJECT TO FREIGHT, MATERIAL/FUEL SURCHARGES, HAZMAT FEES, AND DEFICIT FREIGHT FEES FOR PARTIAL TRUCKS THAT CAN NOT BE FILLED OUT DUE TO PRODUCT AVAILABILITY ISSUE. QUANTITIES AND MATERIAL LISTED ARE BASED ON OUR INTERPRETATION OF THE PROJECT, IT IS THE CUSTOMER RESPONSIBILITY TO REVIEW ALL PLANS AND SPECS FOR ACCURACY. LISTED QUANTITIES ARE ESTIMATES ONLY. BEACON BUILDING PRODUCTS WILL NOT BE BE RESPONSIBLE FOR OVERAGES OR SHORTAGES ON THE QUANTITIES PROVIDED. NON-STOCK, SPECIAL ORDER MATERIAL CANNOT BE RETURNED TO A BEACON FACILITY. PLEASE REFERENCE THE PROJECT QUOTE # WHEN PLACING AN ORDER FOR THIS PROJECT.						

<b>Subtotal:</b>	16,751.29
<b>Tax:</b>	921.32
<b>Bid Total:</b>	<b>17,672.61</b>

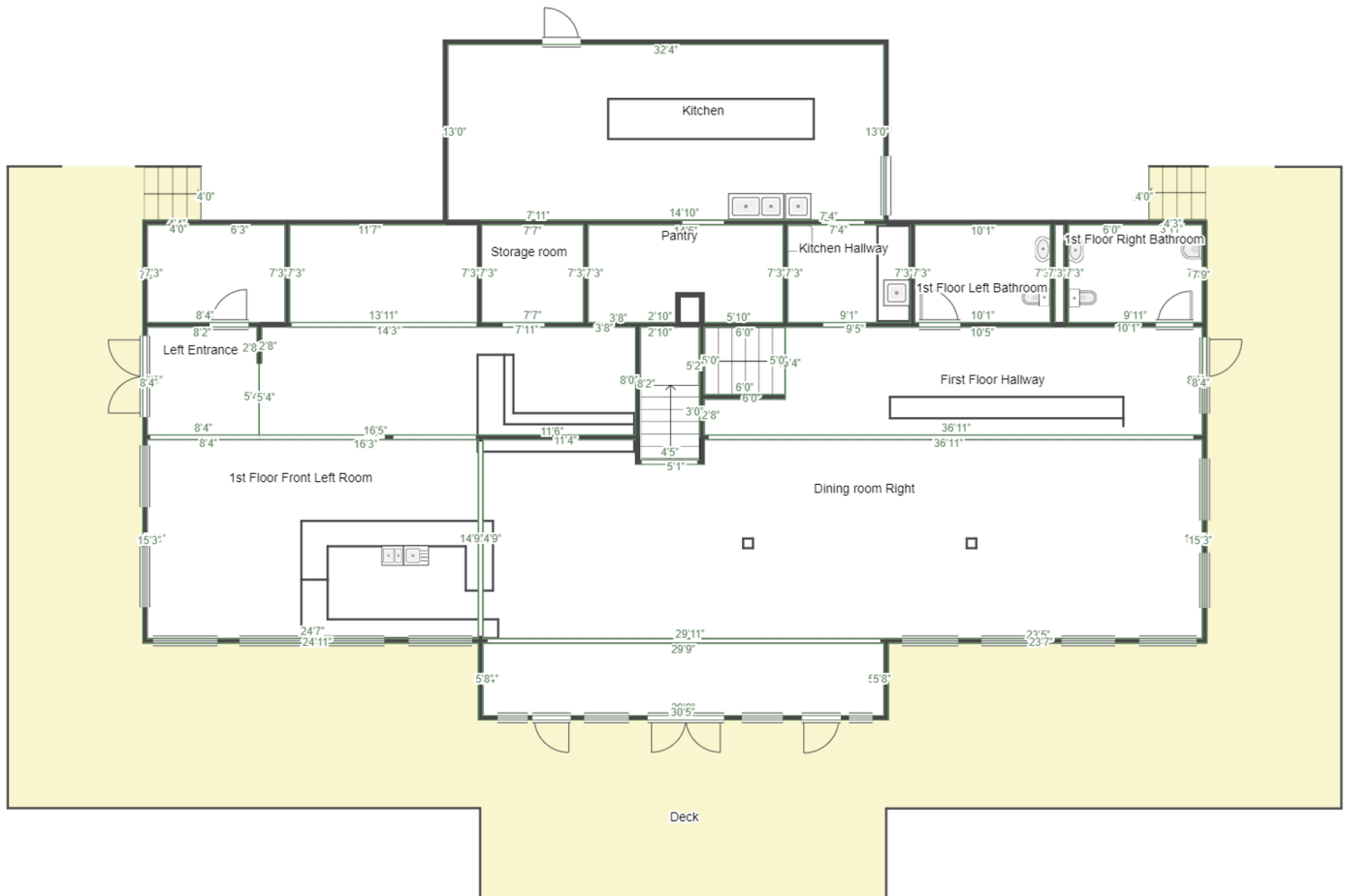
## 1221 Medway Road Medway ME 04460: 1st floor



Disclaimer: the floor plan is for illustrative purposes only. The measurements contained therein are an approximation and may not be exact. While we do not doubt the floor plan's accuracy to within +/- 5%, we make no guarantee or representation and grant no warranty, express or implied, regarding the floor plan or its accuracy or completeness.

You or your advisors must conduct an independent investigation of the property to confirm the accuracy and completeness of the floor plan and to determine if the property is suitable for your space requirements.

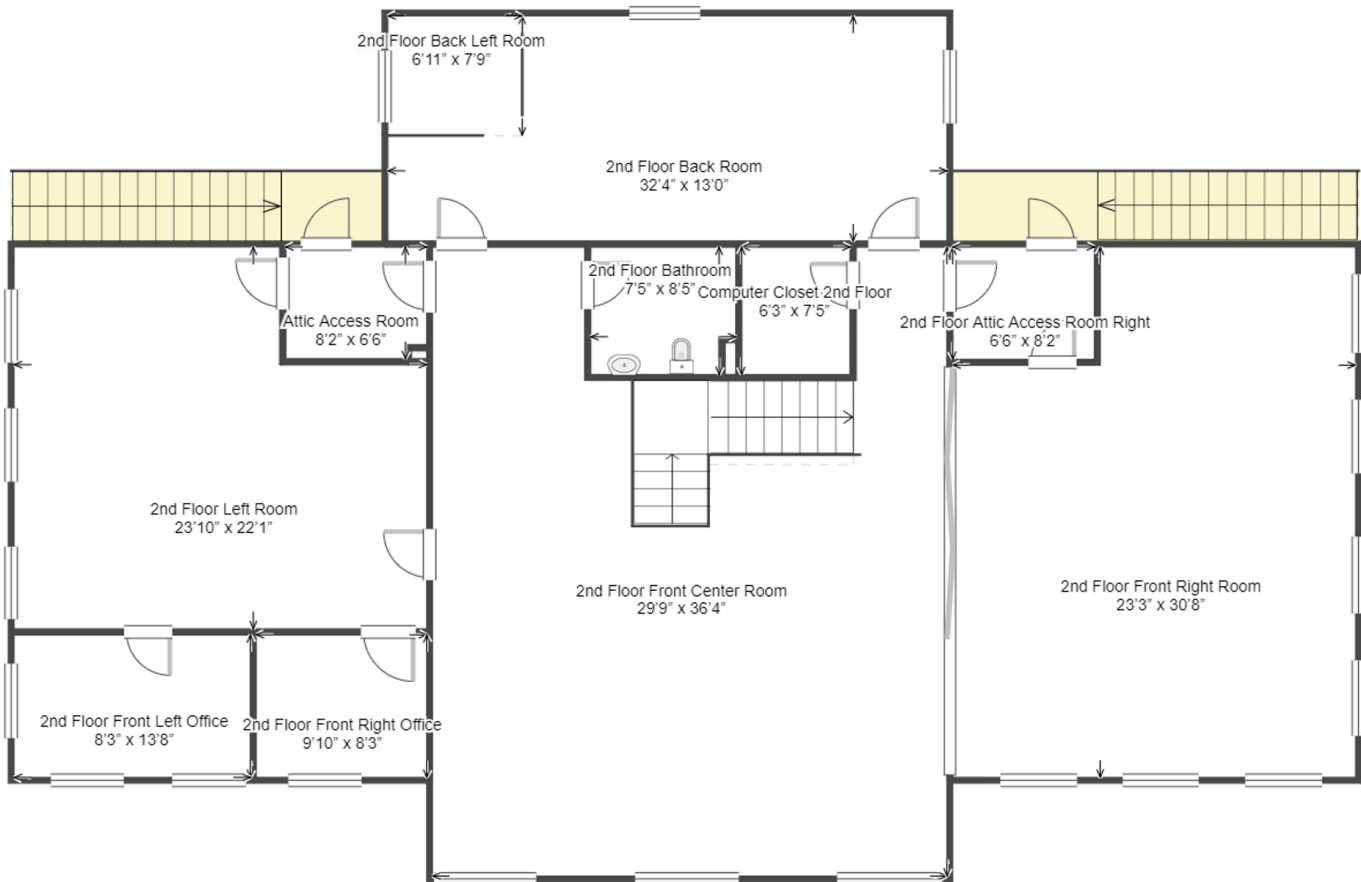
## 1221 Medway Road Medway ME 04460: 1st floor



Disclaimer: the floor plan is for illustrative purposes only. The measurements contained therein are an approximation and may not be exact. While we do not doubt the floor plan's accuracy to within +/- 5%, we make no guarantee or representation and grant no warranty, express or implied, regarding the floor plan or its accuracy or completeness.

You or your advisors must conduct an independent investigation of the property to confirm the accuracy and completeness of the floor plan and to determine if the property is suitable for your space requirements.

## 1221 Medway Road Medway ME 04460: 2nd floor



Disclaimer: the floor plan is for illustrative purposes only. The measurements contained therein are an approximation and may not be exact. While we do not doubt the floor plan's accuracy to within +/- 5%, we make no guarantee or representation and grant no warranty, express or implied, regarding the floor plan or its accuracy or completeness.

You or your advisors must conduct an independent investigation of the property to confirm the accuracy and completeness of the floor plan and to determine if the property is suitable for your space requirements.



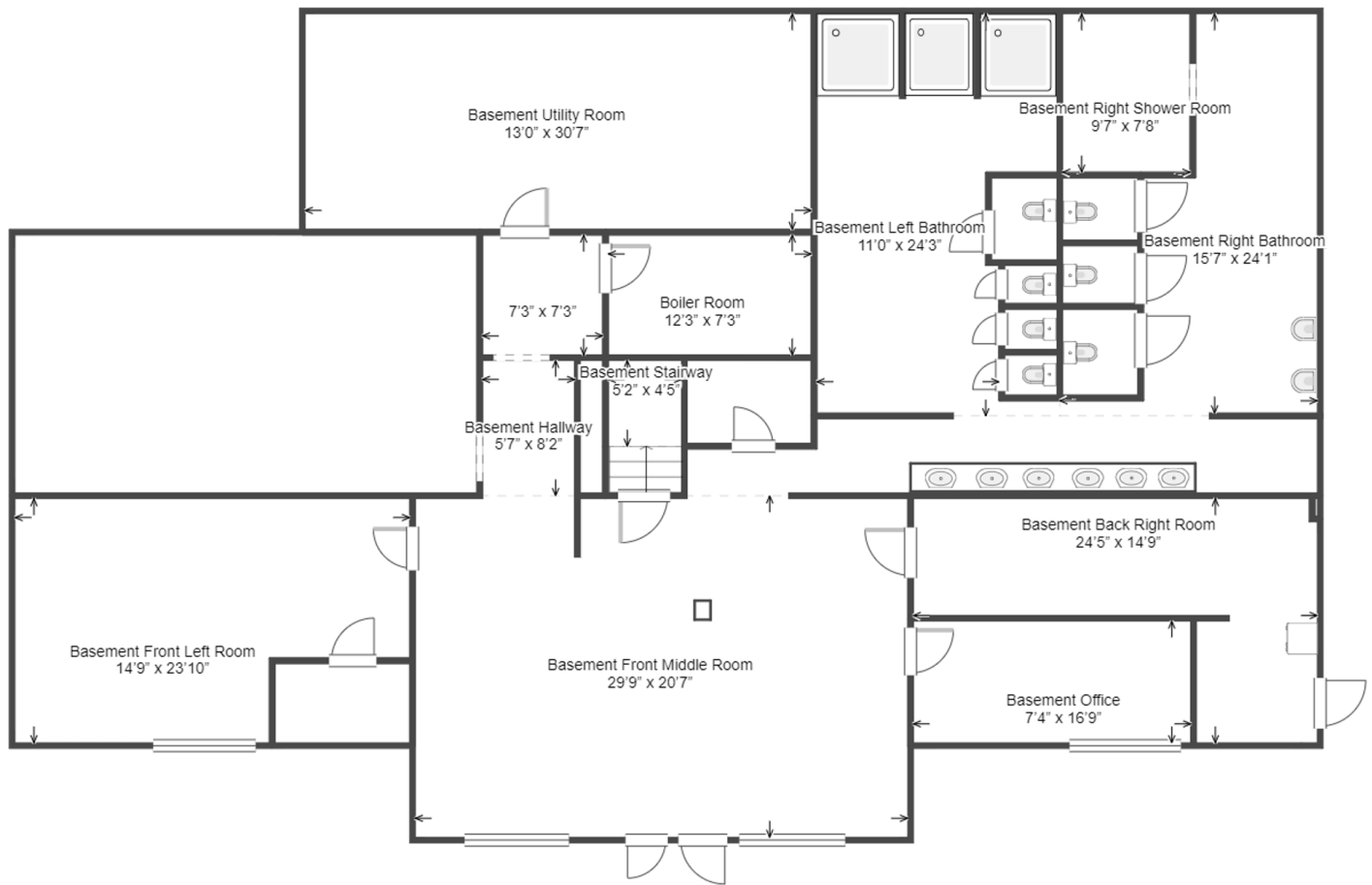
## 1221 Medway Road Medway ME 04460: 2nd floor



Disclaimer: the floor plan is for illustrative purposes only. The measurements contained therein are an approximation and may not be exact. While we do not doubt the floor plan's accuracy to within +/- 5%, we make no guarantee or representation and grant no warranty, express or implied, regarding the floor plan or its accuracy or completeness.

You or your advisors must conduct an independent investigation of the property to confirm the accuracy and completeness of the floor plan and to determine if the property is suitable for your space requirements.

## 1221 Medway Road Medway ME 04460: B1



Disclaimer: the floor plan is for illustrative purposes only. The measurements contained therein are an approximation and may not be exact. While we do not doubt the floor plan's accuracy to within +/- 5%, we make no guarantee or representation and grant no warranty, express or implied, regarding the floor plan or its accuracy or completeness.

You or your advisors must conduct an independent investigation of the property to confirm the accuracy and completeness of the floor plan and to determine if the property is suitable for your space requirements.

