



Cultivating the Health of Our Communities

Wabanaki Public
Health & Wellness

Invitation to Bid

Request For Quote – 2022-006 – Siding

May 2nd, 2022

Dear Recipient,

Wabanaki Public Health and Wellness would like to extend this Invitation to Bid (ITB) on our recently posted Request for Quote (RFQ) 2022-006 Siding. Wabanaki Public Health and Wellness is seeking quotes for building siding work at our commercial building located at 1221 Medway Road, Millinocket, ME 04462. You will find the details of the requested services attached to this document and on our website, [Procurement | Wabanaki Public Health and Wellness \(wabanakiphw.org\)](https://www.wabanakiphw.org/procurement). If you are interested, please email Jake Tauke, and we'll work to schedule a building walkthrough with a representative from each company.

Sincerely,

Jacob Tauke

Procurement Manager

Wabanaki Public Health and Wellness

jtauke@wabanakiphw.org



Basis of Bid

This construction project will ensure that the Millinocket property is protected from the elements and safely accessible to all occupants. Below is a categorical breakdown of all the requested work elements. You may submit your detailed estimate document or fill out and submit the bid tab below. In addition, please see the supplemental documents, which contain the current design and layout of the Millinocket property. The plans provided will give you the square footage needed and trim lengths to be replaced and wrapped.

Base Bid

1. Siding
 - a. Replace siding; the building will be wrapped under Contract **2022-004 – Demo and Repairs.**

Specifications:

1. Siding
 - a. Ledge Stone Bristol Flats 10 sq foot handy pack and all associated corner/trim pieces - Basement Level
 - b. Install vinyl siding planks – First and Second Floor Levels
 - c. Aspen Brown Engineered Rigid Cedar Shake – Peak Level
 - d. Contractor to provide all necessary materials related to installation including starters strips, j channels, corner molding, drip caps, and all other items needed for the proper installation of the siding.



Cultivating the Health of Our Communities

Wabanaki Public
Health & Wellness

BID TAB

Base Bid: 2022-006 - Siding

Contractor Name:

Date:

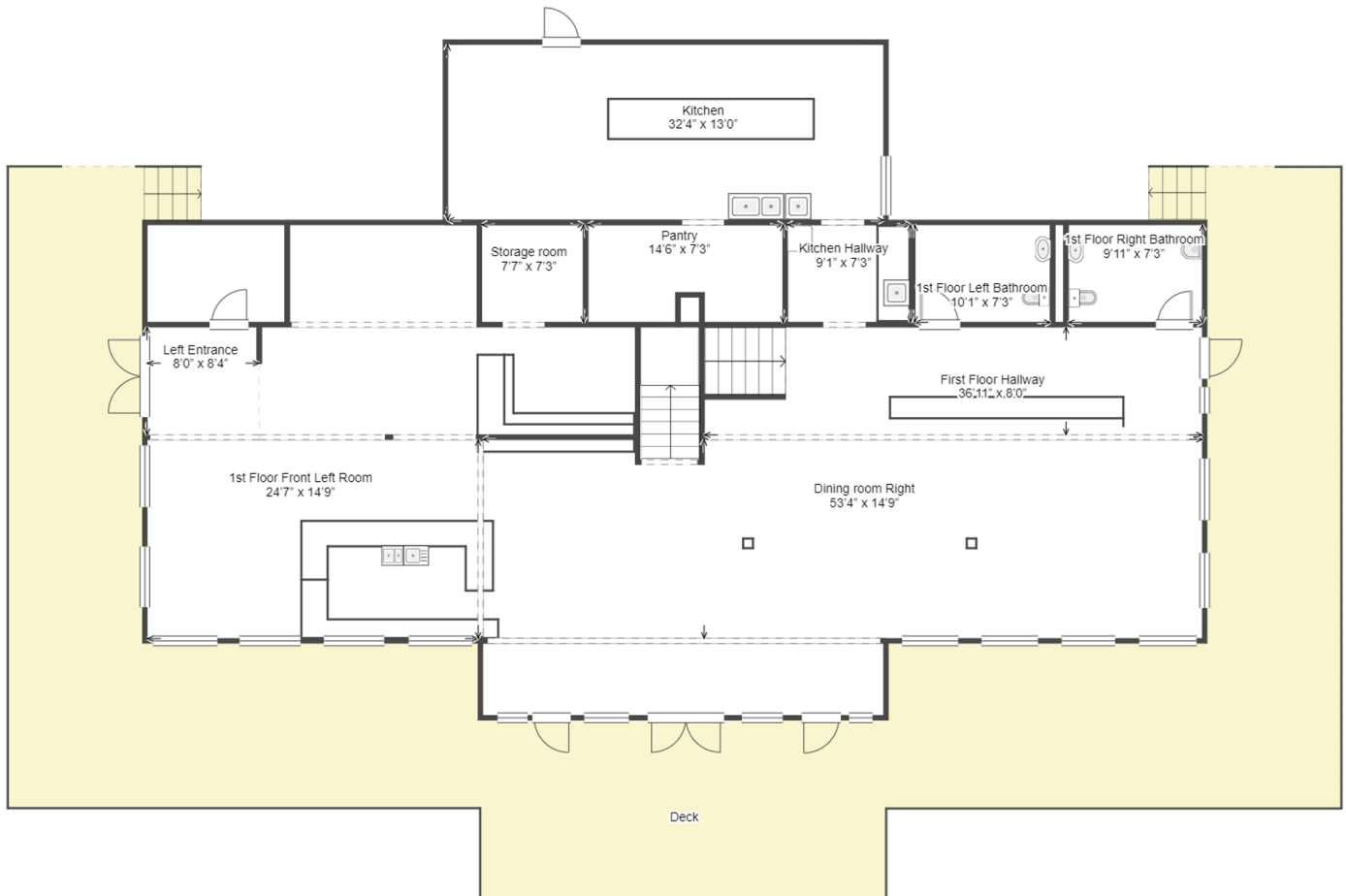
Signature of Bidder:

Due Date: 05/16/2022 at Noon

Bids will NOT be opened and read aloud. Please submit bids via email to jtauke@wabanakiphw.org or by mail to PO Box 1356, Bangor, ME 04402. The project bid is to be reviewed and awarded within three weeks and awarded bidder is to start work immediately.

<i>Item/Service Description</i>	<i>Amount</i>	<i>Unit</i>	<i>Price Per</i>	<i>Total</i>
Siding	1	LS		
			Grand total	

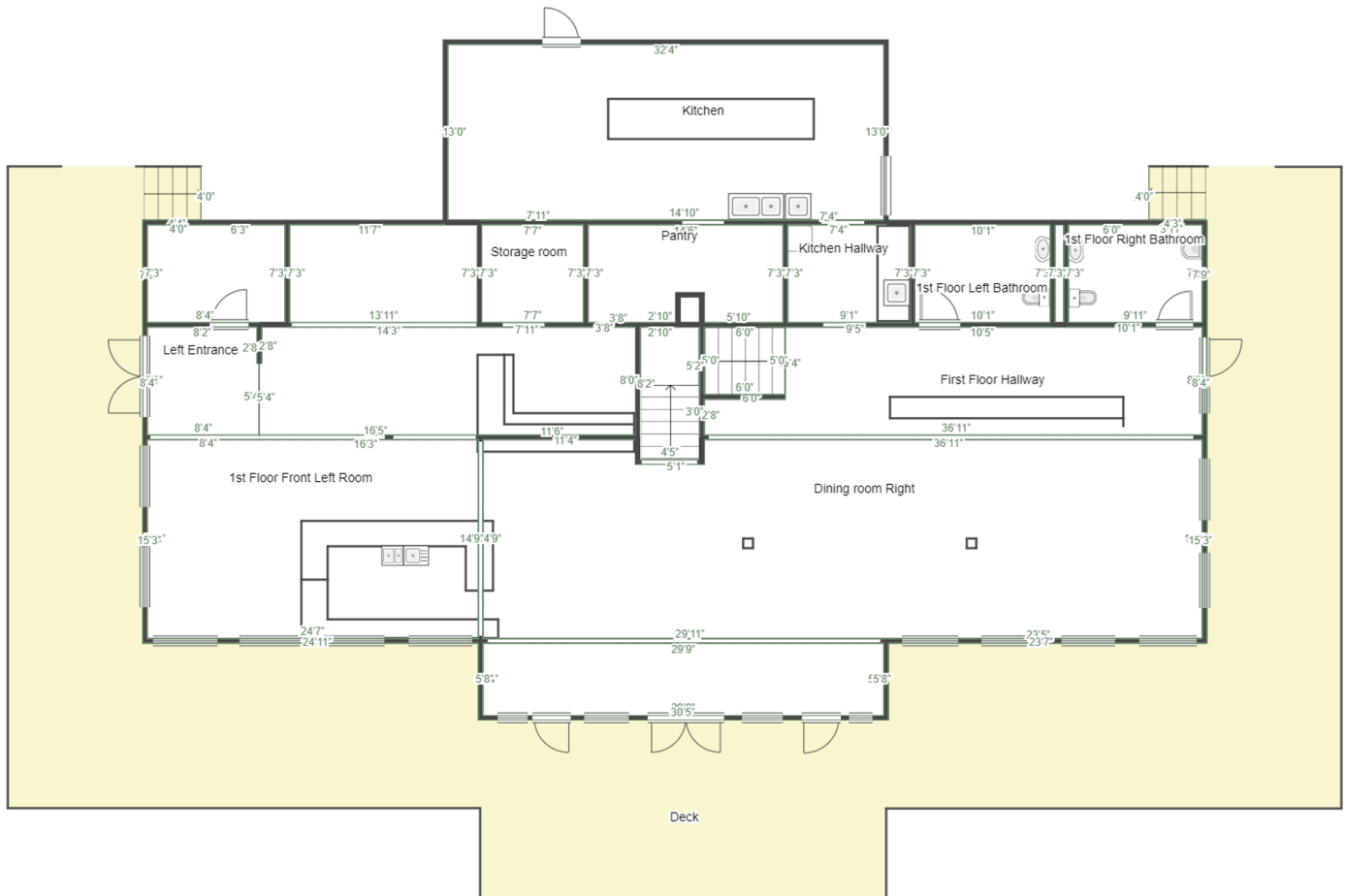
1221 Medway Road Medway ME 04460: 1st floor



Disclaimer: the floor plan is for illustrative purposes only. The measurements contained therein are an approximation and may not be exact. While we do not doubt the floor plan's accuracy to within +/- 5%, we make no guarantee or representation and grant no warranty, express or implied, regarding the floor plan or its accuracy or completeness.

You or your advisors must conduct an independent investigation of the property to confirm the accuracy and completeness of the floor plan and to determine if the property is suitable for your space requirements.

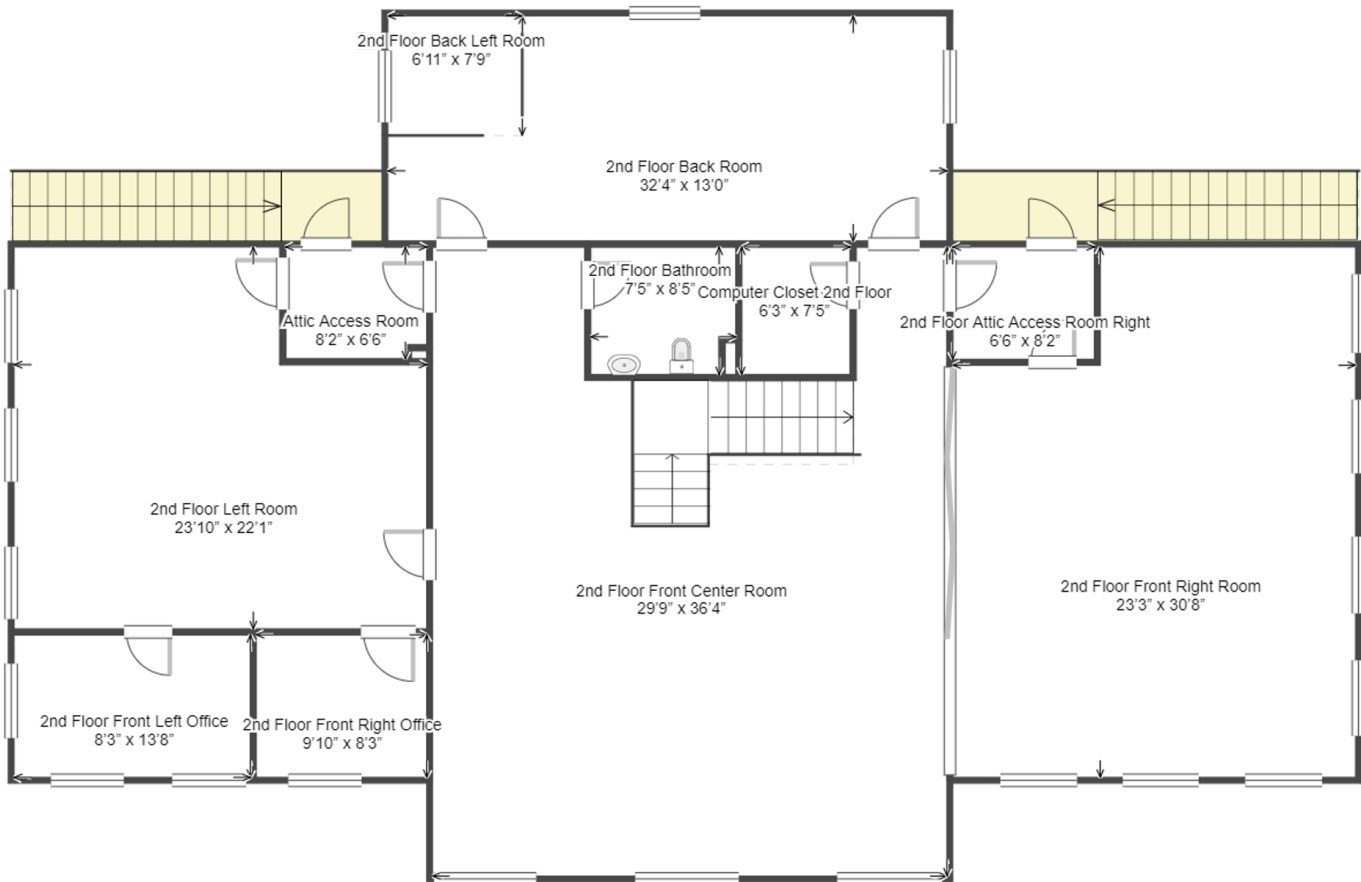
1221 Medway Road Medway ME 04460: 1st floor



Disclaimer: the floor plan is for illustrative purposes only. The measurements contained therein are an approximation and may not be exact. While we do not doubt the floor plan's accuracy to within +/- 5%, we make no guarantee or representation and grant no warranty, express or implied, regarding the floor plan or its accuracy or completeness.

You or your advisors must conduct an independent investigation of the property to confirm the accuracy and completeness of the floor plan and to determine if the property is suitable for your space requirements.

1221 Medway Road Medway ME 04460: 2nd floor



Disclaimer: the floor plan is for illustrative purposes only. The measurements contained therein are an approximation and may not be exact. While we do not doubt the floor plan's accuracy to within +/- 5%, we make no guarantee or representation and grant no warranty, express or implied, regarding the floor plan or its accuracy or completeness.

You or your advisors must conduct an independent investigation of the property to confirm the accuracy and completeness of the floor plan and to determine if the property is suitable for your space requirements.

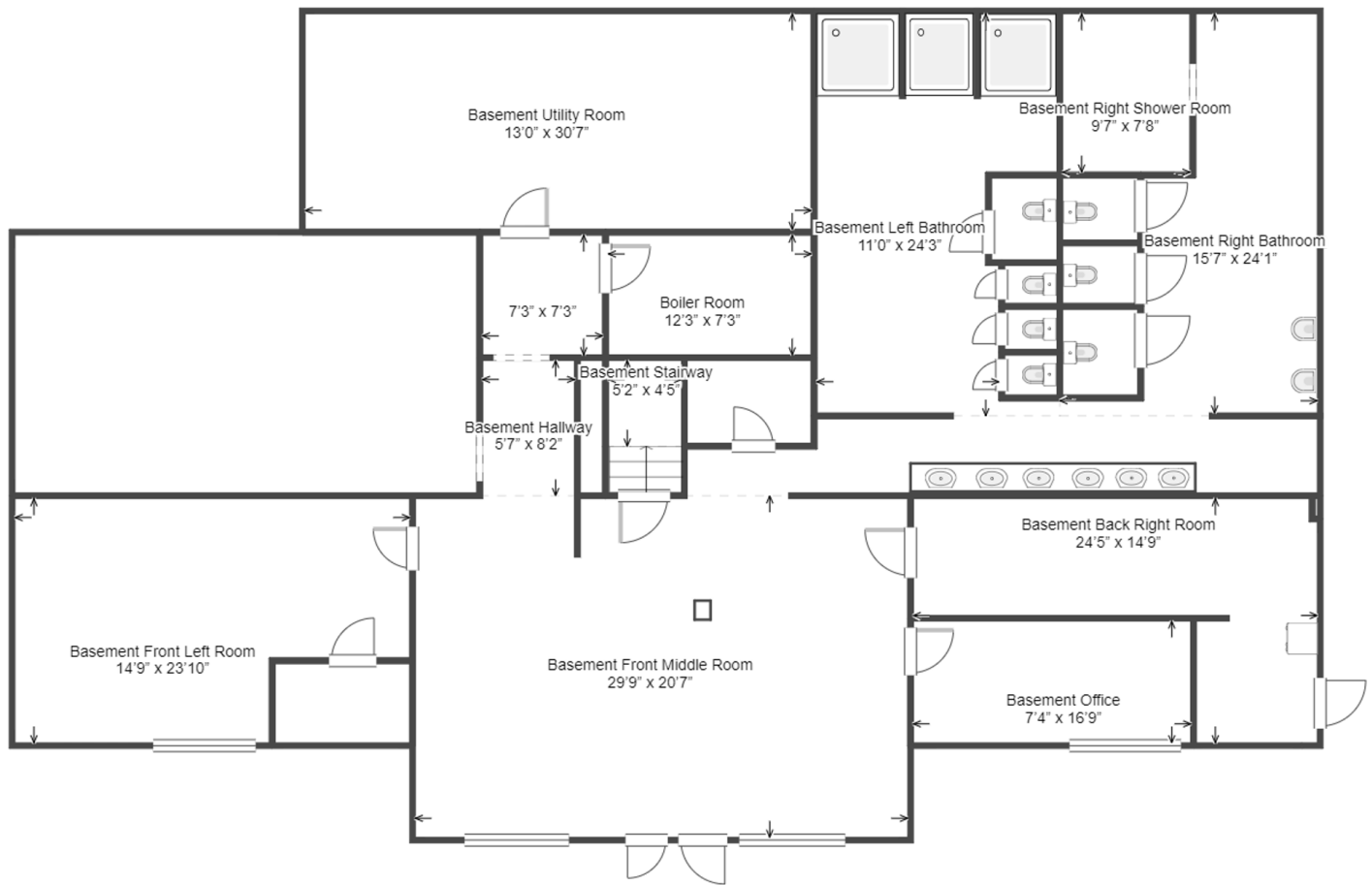
1221 Medway Road Medway ME 04460: 2nd floor



Disclaimer: the floor plan is for illustrative purposes only. The measurements contained therein are an approximation and may not be exact. While we do not doubt the floor plan's accuracy to within +/- 5%, we make no guarantee or representation and grant no warranty, express or implied, regarding the floor plan or its accuracy or completeness.

You or your advisors must conduct an independent investigation of the property to confirm the accuracy and completeness of the floor plan and to determine if the property is suitable for your space requirements.

1221 Medway Road Medway ME 04460: B1



Disclaimer: the floor plan is for illustrative purposes only. The measurements contained therein are an approximation and may not be exact. While we do not doubt the floor plan's accuracy to within +/- 5%, we make no guarantee or representation and grant no warranty, express or implied, regarding the floor plan or its accuracy or completeness.

You or your advisors must conduct an independent investigation of the property to confirm the accuracy and completeness of the floor plan and to determine if the property is suitable for your space requirements.

1221 Medway Road Medway ME 04460: B1



Disclaimer: the floor plan is for illustrative purposes only. The measurements contained therein are an approximation and may not be exact. While we do not doubt the floor plan's accuracy to within +/- 5%, we make no guarantee or representation and grant no warranty, express or implied, regarding the floor plan or its accuracy or completeness.

You or your advisors must conduct an independent investigation of the property to confirm the accuracy and completeness of the floor plan and to determine if the property is suitable for your space requirements.